

Krusty Koin Number

01

Obverse



Reverse



Base Measurements

Type of Metal:	<u>Unknown</u>
Diameter (mm):	<u>19</u>
Thickness (mm):	<u>2.5</u>
Weight (gm):	<u>2.72</u>
Coating Color:	<u>Brown</u>
AE Size:	<u>AE3</u>
Additional Notes / Information	

Method used for this experiment



Method Used: Soaking, Scrubbing, Repeat
 Product Used: Vulpex
 Product URL: <http://www.dirtyoldcoins.com/coinsupplies/>

Notes on Method:

Mixing it with Distilled Water.

Product Information:

Vulpex (potassium methylcyclohexyleate) is an anionic detergent. It was originally used for the conservation of wall paintings, where its pH of 10.5-11.5 (a result of the addition of potassium hydroxide by the manufacturer) was appropriate. Its high pH makes it very effective, but it is unsuitable for cleaning alkaline pH sensitive surfaces, for example painted or varnished objects.

Initial Mixture - Specific's about everything

Container Used



4 oz Glad Ware Mini Rounds

Description of the mixture.

Taking 20 ml of distilled water and nuking it in the microwave to bring the temperature up. Vulpex says you do not have to do this and it will work fine in room temperature. But figured that I would warm it up to help it along. Additionally I used the syringe to draw the water and Vulpex in the syringe to further mix the solution toughly.

Parts Cleaning Solution: 7 (ml)

Solution % 25.0%

Parts Distilled Water: 21 (ml)

Experiment Data - Vulpex

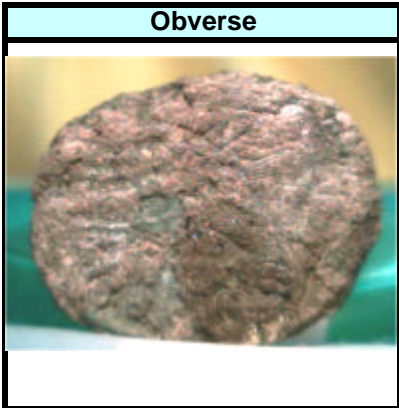
Start Date of Experiment: 8/14/2003 (mm/dd/yyyy)
 Time Started: 19:00 Military Time
 End Date of Experiment: (mm/dd/yyyy)
 Time Ended: Military Time

Duration of Experiment
 Duration in Days: 0
 Duration in Hours: 0.00

Interval **Interval 1 - 1 Day(s) 18 Hour(s) from last point of measurement** 1

Interval Date: 8/16/2003 Interval Duration (days) 1
 Interval Time: 13:00 Interval Duration (hours) 42.00
 Total Experiment Duration: 1 Days 18.00 Hour(s)

Notes on Duration/delays etc.



Base Measurements
 Type of Metal: Unknown
 Diameter (mm): 19
 Thickness (mm): 2.5
 Weight (gm): 2.66
 Coating Color: Brown
 AE Size: AE3

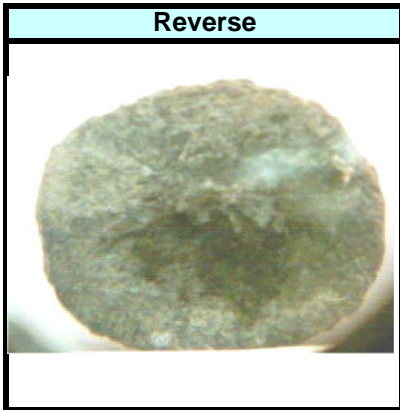
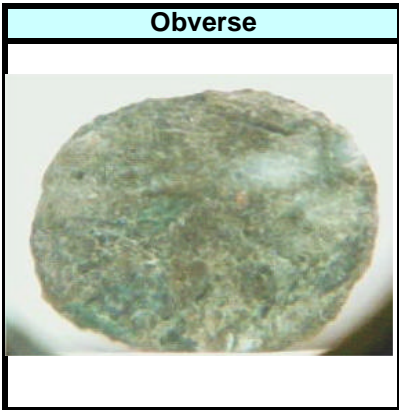
Solution for Next Interval
 Parts Cleaning Solution (ml): 7
 Parts Other Distilled Wtr (ml): 21
 Solution Strength %: 25.0%

Notes / Observations / Tools Used / Etc..
 Cleaned the coin with the toothbrush, washed it a little, and then hit it with the brass pen brush. Crude is coming off. Looks like it is working pretty good. Changed the solution so that it would be fresh for the next soak.

Interval **Interval 2 - 2 Day(s) 6 Hour(s) from last point of measurement** 2

Interval Date: 8/18/2003 Interval Duration (days) 2
 Interval Time: 19:00 Interval Duration (hours) 54.00
 Total Experiment Duration: 4 Days 0.00 Hour(s)

Notes on Duration/delays etc.



Base Measurements
 Type of Metal: Unknown
 Diameter (mm): Not Measured
 Thickness (mm): Not Measured
 Weight (gm): 2.63
 Coating Color: Brown
 AE Size: AE3

Solution for Next Interval
 Parts Cleaning Solution (ml): 7
 Parts Other Distilled Wtr (ml): 21
 Solution Strength %: 25.0%

Notes / Observations / Tools Used / Etc..
 Same as above. Crude still coming off, but I think it needs to soak for a while more. No change of the solution.

Experiment Data - Vulpex

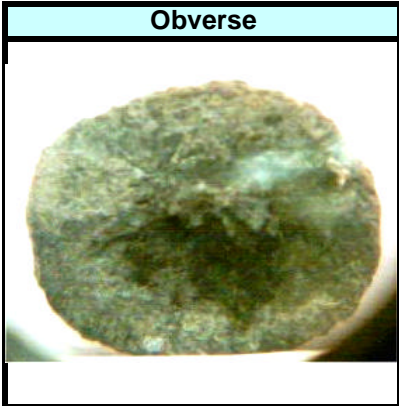
Start Date of Experiment: 8/14/2003 (mm/dd/yyyy)
 Time Started: 19:00 Military Time
 End Date of Experiment: (mm/dd/yyyy)
 Time Ended: Military Time

Duration of Experiment
 Duration in Days: 0
 Duration in Hours: 0.00

Interval Interval 3 - 4 Day(s) 8 Hour(s) from last point of measurement 3

Interval Date: 8/22/2003 Interval Duration (days) 4
 Interval Time: 21:30 Interval Duration (hours) 98.50
 Total Experiment Duration: 8 Days 2.50 Hour(s)

Notes on Duration/delays etc.



Base Measurements
 Type of Metal: Unknown
 Diameter (mm): Not Measured
 Thickness (mm): Not Measured
 Weight (gm): 2.59
 Coating Color: Brown
 AE Size: AE3

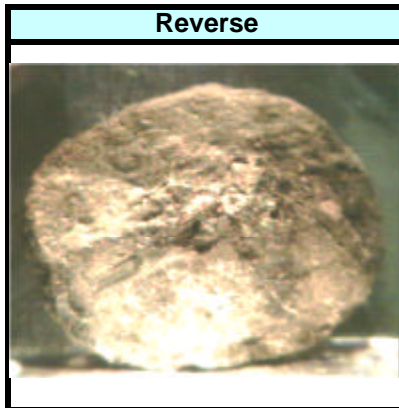
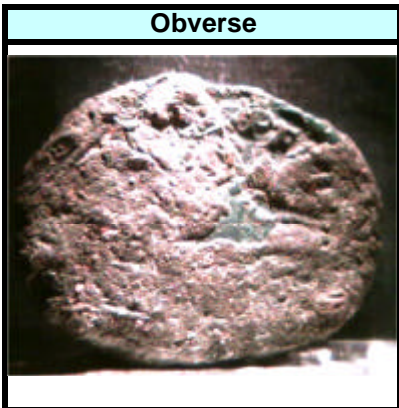
Solution for Next Interval
 Parts Cleaning Solution (ml): 7
 Parts Other Distilled Wtr (ml): 21
 Solution Strength %: 25.0%

Notes / Observations / Tools Used / Etc..
 Did not change the solution. It is cleaning the coin and you can start to see layers. Have been giving it a good brushing with the toothbrush and the brass cleaning pen.

Interval Interval 4 - 10 Day(s) 6 Hour(s) from last point of measurement 4

Interval Date: 9/2/2003 Interval Duration (days) 10
 Interval Time: 19:30 Interval Duration (hours) 262.00
 Total Experiment Duration: 19 Days 0.50 Hour(s)

Notes on Duration/delays etc.



Base Measurements
 Type of Metal: Unknown
 Diameter (mm): Not Measured
 Thickness (mm): Not Measured
 Weight (gm): 2.55
 Coating Color: Brown
 AE Size: AE3

Solution for Next Interval
 Parts Cleaning Solution (ml): 7
 Parts Other Distilled Wtr (ml): 21
 Solution Strength %: 25.0%

Notes / Observations / Tools Used / Etc..
 Did not change the solution. It is cleaning the coin and you can start to see layers. Have been giving it a good brushing with the toothbrush and the brass cleaning pen.

Experiment Data - Vulpex

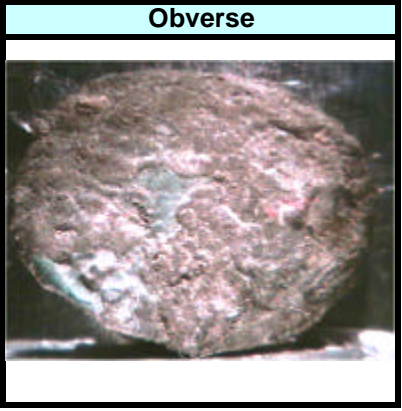
Start Date of Experiment: 8/14/2003 (mm/dd/yyyy)
 Time Started: 19:00 Military Time
 End Date of Experiment: (mm/dd/yyyy)
 Time Ended: Military Time

Duration of Experiment	
Duration in Days:	<u>0</u>
Duration in Hours:	<u>0.00</u>

Interval	Interval 5 - 2 Day(s) 28 Hour(s) from last point of measurement	5
----------	---	---

Interval Date: 9/5/2003 Interval Duration (days) 2
 Interval Time: 17:30 Interval Duration (hours) 70.00
 Total Experiment Duration: 21 Days 22.50 Hour(s)

Notes on Duration/delays etc.



Base Measurements	
Type of Metal:	<u>Unknown</u>
Diameter (mm):	<u>Not Measured</u>
Thickness (mm):	<u>Not Measured</u>
Weight (gm):	<u>2.52</u>
Coating Color:	<u>Brown</u>
AE Size:	<u>AE3</u>

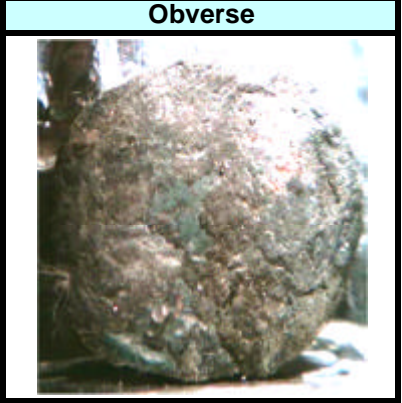
Solution for Next Interval	
Parts Cleaning Solution (ml):	<u>7</u>
Parts Other Distilled Wtr (ml):	<u>21</u>
Solution Strength %:	<u>25.0%</u>

Notes / Observations / Tools Used / Etc..
Did not change the solution. It is cleaning the coin and you can start to see layers. Have been giving it a good brushing with the toothbrush and the brass cleaning pen.

Interval	Interval 6 - 15 Day(s) 8 Hour(s) from last point of measurement	6
----------	---	---

Interval Date: 9/20/2003 Interval Duration (days) 15
 Interval Time: 21:00 Interval Duration (hours) 363.50
 Total Experiment Duration: 37 Days 2.00 Hour(s)

Notes on Duration/delays etc.



Base Measurements	
Type of Metal:	<u>Unknown</u>
Diameter (mm):	<u>Not Measured</u>
Thickness (mm):	<u>Not Measured</u>
Weight (gm):	<u>2.49</u>
Coating Color:	<u>Brown</u>
AE Size:	<u>AE3</u>

Solution for Next Interval	
Parts Cleaning Solution (ml):	<u>7</u>
Parts Other Distilled Wtr (ml):	<u>21</u>
Solution Strength %:	<u>25.0%</u>

Notes / Observations / Tools Used / Etc..
No Change in the solution. Vulpex seems to be working slowly. But working none the less. Brushing scrubbing hoping for some good details.

Experiment Data - Vulpex

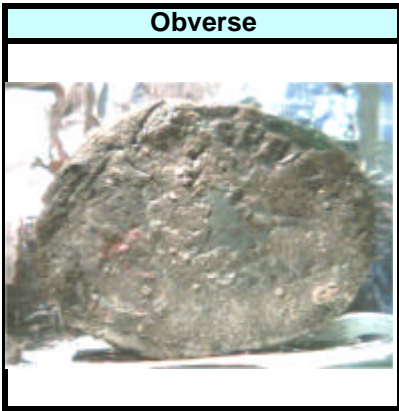
Start Date of Experiment: 8/14/2003 (mm/dd/yyyy)
 Time Started: 19:00 Military Time
 End Date of Experiment: (mm/dd/yyyy)
 Time Ended: Military Time

Duration of Experiment
 Duration in Days: 0
 Duration in Hours: 0.00

Interval **Interval 7 - 14 Day(s) 26 Hour(s) from last point of measurement** 7

Interval Date: 10/5/2003 Interval Duration (days) 14
 Interval Time: 15:00 Interval Duration (hours) 354.00
 Total Experiment Duration: 51 Days 20.00 Hour(s)

Notes on Duration/delays etc.



Base Measurements
 Type of Metal: Unknown
 Diameter (mm): 19
 Thickness (mm): 2
 Weight (gm): 2.46
 Coating Color: Brown
 AE Size: AE3

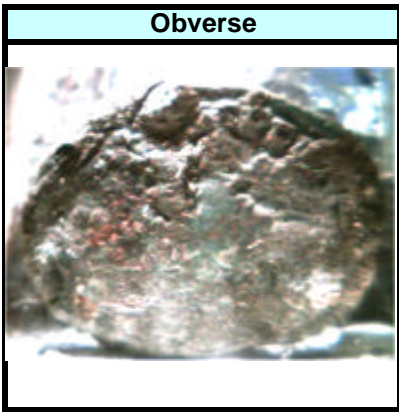
Solution for Next Interval
 Parts Cleaning Solution (ml): 7
 Parts Other Distilled Wtr (ml): 21
 Solution Strength %: 25.0%

Notes / Observations / Tools Used / Etc..
 Well it seems that Vulpex is slowing down in the cleaning. I am going to try Vulpex heated up to see if it makes a difference. Scrubbed, brushed, etc.

Interval **Interval 8 - 0 Day(s) 28 Hour(s) from last point of measurement** 8

Interval Date: 10/5/2003 Interval Duration (days) 0
 Interval Time: 17:00 Interval Duration (hours) 2.00
 Total Experiment Duration: 51 Days 22.00 Hour(s)

Notes on Duration/delays etc.



Base Measurements
 Type of Metal: Unknown
 Diameter (mm): Not Measured
 Thickness (mm): Not Measured
 Weight (gm): Not Measured
 Coating Color: Brown
 AE Size: Unknown

Solution for Next Interval
 Parts Cleaning Solution (ml): 7
 Parts Other Distilled Wtr (ml): 21
 Solution Strength %: 25.0%

Notes / Observations / Tools Used / Etc..
 We'll I tried nuking the mixture and then placing the mixture and coin in a toaster oven at 400 degrees for 10 minutes. Needless to say the coffee cup is garbage, and the place stinks. Not sure I recommend that you do this indoors :-). But it seemed to help penetrate the dirt coating. Problem is I was rushed for time, so no stats on the coins. Refreshed the mixture and will take measurements and so forth on round 2.