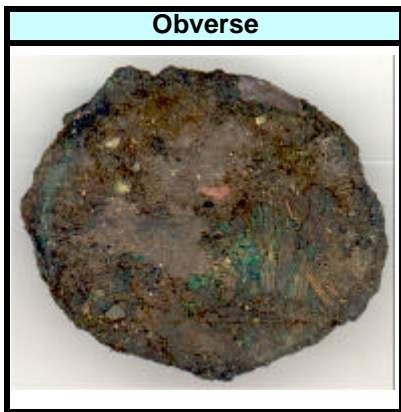


Krusty Koin Number # 11



Base Measurements	
Type of Metal:	<u>Unknown</u>
Diameter (mm):	<u>22</u>
Thickness (mm):	<u>3</u>
Weight (gm):	<u>3.97</u>
Coating Color:	<u>Black/Brown</u>
AE Size:	<u>AE2</u>
Additional Notes / Information	

Method used for this experiment



Method Used: Soaking, Scrubbing, Repeat
 Product Used: 100% Real Lemon Juice
 Product URL: www.realemon.com

Notes on Method:
 Not mixed with anything

Product Information:
NEED PRODUCT INFO

Initial Mixture - Specific's about everything

Container Used



4 oz Glad Ware Mini Rounds

Description of the mixture.

100% Lemon Juice for the initial Mixture

Parts Cleaning Solution: 20 (ml) **Solution %** 100.0%

Parts Distilled Water: 0 (ml)

Experiment Data - 100% Real Lemon Juice

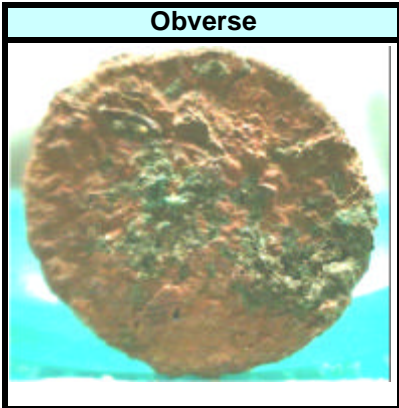
Start Date of Experiment: 8/11/2003 (mm/dd/yyyy)
 Time Started: 17:30 Military Time
 End Date of Experiment: (mm/dd/yyyy)
 Time Ended: Military Time

Duration of Experiment
 Duration in Days: 0
 Duration in Hours: 0.00

Interval **Interval 1 - 3 Day(s) 0 Hour(s) from last point of measurement** 1

Interval Date: 8/14/2003 Interval Duration (days) 3
 Interval Time: 18:00 Interval Duration (hours) 72.50
 Total Experiment Duration: 3 Days 0.50 Hour(s)

Notes on Duration/delays etc.
 Yikes... I think this one is Silver!



Base Measurements
 Type of Metal: Silver??
 Diameter (mm): 20
 Thickness (mm): 2
 Weight (gm): 3.21
 Coating Color: Red
 AE Size: AE2

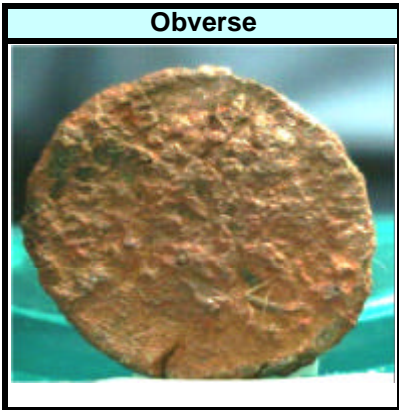
Solution for Next Interval
 Parts Cleaning Solution (ml): 2
 Parts Other Distilled Wtr (ml): 18
 Solution Strength %: 10.0%

Notes / Observations / Tools Used / Etc..
 Do you see those Silver looking features poking thru... In hand I am pretty sure it is Silver. Now, take 300 crusty roman coins. Break them into lots of 15, randomly assign those lots to participants in a contest, and then have one of the contestants decide to perform experiments on the coins, and happen to place the Silver coin in Lemon Juice. Where is my lottery ticket. After my heart quit thumping, I promptly dropped the solution to 10% ... may go 5%.

Interval **Interval 2 - 1 Day(s) 0 Hour(s) from last point of measurement** 2

Interval Date: 8/15/2003 Interval Duration (days) 1
 Interval Time: 18:00 Interval Duration (hours) 24.00
 Total Experiment Duration: 4 Days 0.50 Hour(s)

Notes on Duration/delays etc.



Base Measurements
 Type of Metal: Silver??
 Diameter (mm): 20
 Thickness (mm): 2
 Weight (gm): 3.1
 Coating Color: Red
 AE Size: AE2

Solution for Next Interval
 Parts Cleaning Solution (ml): 0
 Parts Other Distilled Wtr (ml): 30
 Solution Strength %: 0.0%

Notes / Observations / Tools Used / Etc..

Experiment Data - 100% Real Lemon Juice

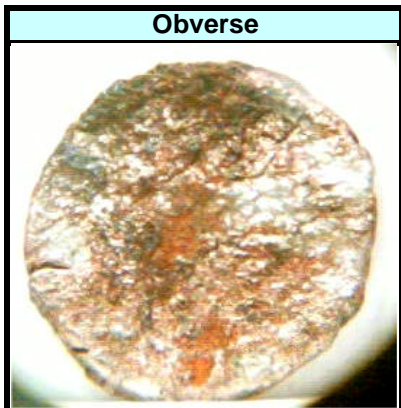
Start Date of Experiment: 8/11/2003 (mm/dd/yyyy)
 Time Started: 17:30 Military Time
 End Date of Experiment: (mm/dd/yyyy)
 Time Ended: Military Time

Duration of Experiment
 Duration in Days: 0
 Duration in Hours: 0.00

Interval Interval 3 - 3 Day(s) 2 Hour(s) from last point of measurement 3

Interval Date: 8/18/2003 Interval Duration (days) 3
 Interval Time: 20:00 Interval Duration (hours) 74.00
 Total Experiment Duration: 7 Days 2.50 Hour(s)

Notes on Duration/delays etc.



Base Measurements
 Type of Metal: Silver??
 Diameter (mm): 20
 Thickness (mm): 2
 Weight (gm): 3.1
 Coating Color: Red
 AE Size: AE2

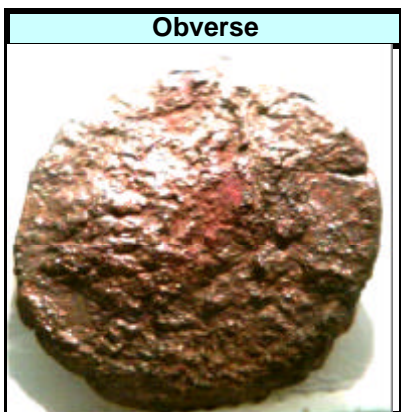
Solution for Next Interval
 Parts Cleaning Solution (ml): 0
 Parts Other Distilled Wtr (ml): 30
 Solution Strength %: 0.0%

Notes / Observations / Tools Used / Etc..

Interval Interval 4 - 4 Day(s) 3 Hour(s) from last point of measurement 4

Interval Date: 8/22/2003 Interval Duration (days) 4
 Interval Time: 21:30 Interval Duration (hours) 97.50
 Total Experiment Duration: 11 Days 4.00 Hour(s)

Notes on Duration/delays etc.



Base Measurements
 Type of Metal: Silver??
 Diameter (mm): 20
 Thickness (mm): 2
 Weight (gm): 3.1
 Coating Color: Red
 AE Size: AE2

Solution for Next Interval
 Parts Cleaning Solution (ml): 0
 Parts Other Distilled Wtr (ml): 0
 Solution Strength %: 100.0%

Notes / Observations / Tools Used / Etc..

Experiment Data - 100% Real Lemon Juice

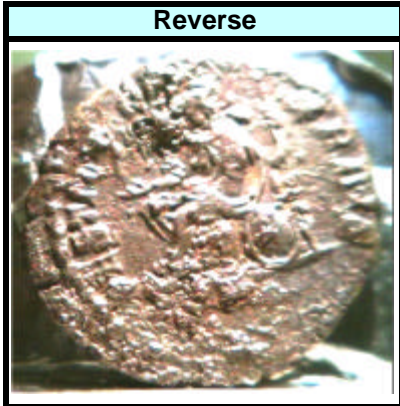
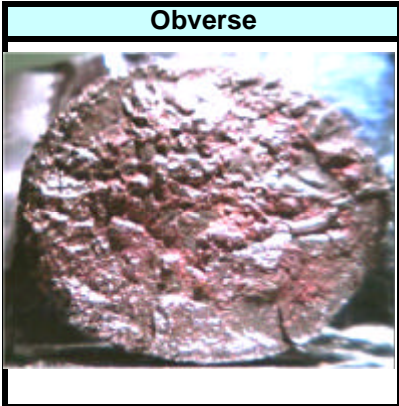
Start Date of Experiment: 8/11/2003 (mm/dd/yyyy)
 Time Started: 17:30 Military Time
 End Date of Experiment: (mm/dd/yyyy)
 Time Ended: Military Time

Duration of Experiment
 Duration in Days: 0
 Duration in Hours: 0.00

Interval **Interval 5 - 28 Day(s) 3 Hour(s) from last point of measurement** 5

Interval Date: 9/20/2003 Interval Duration (days) 28
 Interval Time: 21:00 Interval Duration (hours) 695.50
 Total Experiment Duration: 40 Days 3.50 Hour(s)

Notes on Duration/delays etc.



Base Measurements
 Type of Metal: Silver??
 Diameter (mm): 20
 Thickness (mm): 2
 Weight (gm): 2.95
 Coating Color: Red
 AE Size: AE2

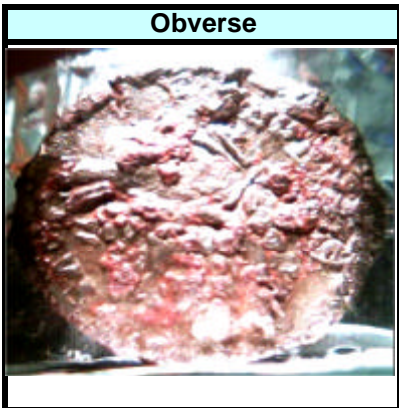
Solution for Next Interval
 Parts Cleaning Solution (ml): 0
 Parts Other Distilled Wtr (ml): 100
 Solution Strength %: 0.0%

Notes / Observations / Tools Used / Etc..
 Okay.. Lesson number 1... be patient. I had written this coin off, because it was a silvered coin and I thought it was a dead issue. Well I was wrong. I changed the solution to 100% Distilled Water and on the second soak and clean the FRONT started to clean up!!! Who Hoo... You really can't tell from the picture ... but I think that the coin is salvagable.. Time will tell... and I'll pay better attention.

Interval **Interval 6 - 14 Day(s) 21 Hour(s) from last point of measurement** 6

Interval Date: 10/5/2003 Interval Duration (days) 14
 Interval Time: 15:00 Interval Duration (hours) 354.00
 Total Experiment Duration: 54 Days 21.50 Hour(s)

Notes on Duration/delays etc.



Base Measurements
 Type of Metal: SILVER!!
 Diameter (mm): 20
 Thickness (mm): 1.5
 Weight (gm): 2.9
 Coating Color: Red Spots
 AE Size: AE2

Solution for Next Interval
 Parts Cleaning Solution (ml): 0
 Parts Other _____ (ml): 100
 Solution Strength %: 0.0%

Notes / Observations / Tools Used / Etc..
 Okay, here is a lesson in patience. Originally I thought that this was some kind of a silvered coin. But after further cleaning what I thought was bronze/brass/copper showing thru was remaining "dirt". What I think this is ..drum roll... a COMMODUS Denarius ... PURE SILVER .. not SILVERED. Imagine my surprise... I'll have to run it thru the scanner to get a better high res picture.